

Melvin's list of interesting bee facts that he didn't get a chance to read out in Meadow Hall (see page 102)



1

A worker bee only lives for 6 weeks.

2

One bee will make one twelfth of a teaspoon of honey in its lifetime.



3

Bees will fly 50,000 miles and visit two million flowers to make one jar of honey.

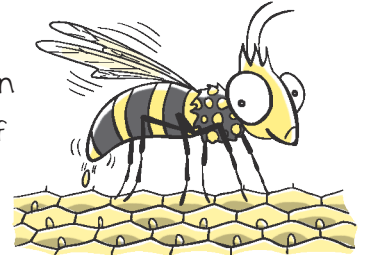


4

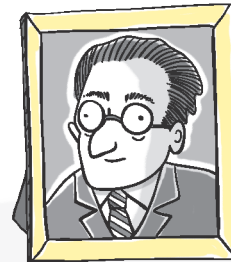
A bee can carry its own weight in pollen and nectar.

5

A queen bee can lay a quarter of a million eggs in a year.



\*



6

The language of the waggle dance was decoded by Karl von Frisch 50 years ago.

7

At the end of the summer, drones that haven't mated with a new queen are thrown out from the hive to die.

